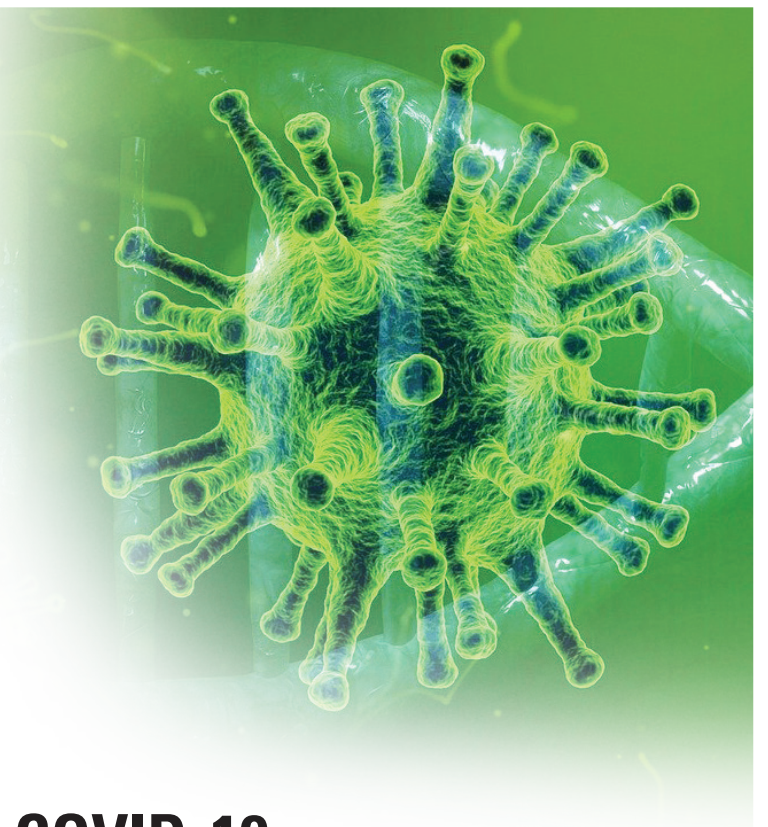
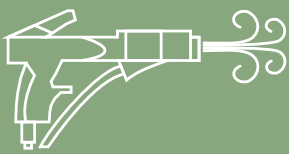


Protecting spaces and the people in them



Remediation Services for COVID-19

With many people under one roof, cleaning and sanitizing during a pandemic may not be enough. It is important to neutralize all pathogens. Consider adding our trained professionals to your team to help keep your facility safe.



EQUIPMENT

We use electrostatic technology which allows us to sanitize and disinfect objects and hard to reach places.



CHEMICALS

Surface TB, an EPA registered chemical, is used in hospitals, supermarkets, schools, and areas with a hazard of cross-contamination.



TRAINING

Our crew has been certified by the Global Biorisk Advisory Council, with emphasis on SARS-CoV-2/ COVID-19.

We are all in this fight together.
Consider us an integral part of your COVID-19 abatement strategy.



EQUIPMENT

We have electrostatic battery-powered backpack sprayers with the capacity to cover large areas. This technology creates a magnetic attraction between spray droplets and targets surfaces resulting in 360 wrap-around coverage. This technology vastly enhances disinfectant measures and helps proactively prevent infectious outbreaks from occurring.

- 3D objects and hard-to-reach places receive a clean, even coat
- Quick-dry times, and the ability to re-enter your facility in less than an hour upon the completion of our services
- Stops the spread of pathogens such as HIV, MRSA, Sars, and COVID-19

We also use industrial pressure washers which heat the water up to 220 degrees, and auto scrubbers to disinfect floors.



CHEMICALS

We use SurfaceTB and One Step, EPA registered chemicals that have a pleasant citrus/floral scent. This solution is used in hospitals (including operating rooms and ICU areas), nursing homes, schools, lodging establishments, retail businesses, and other facilities where there is a hazard of cross contamination.

Call us for a proposal and/or a risk assessment

- In business for over 20 years
- Available with 24-hour notice
- Service • Supplies • Rentals